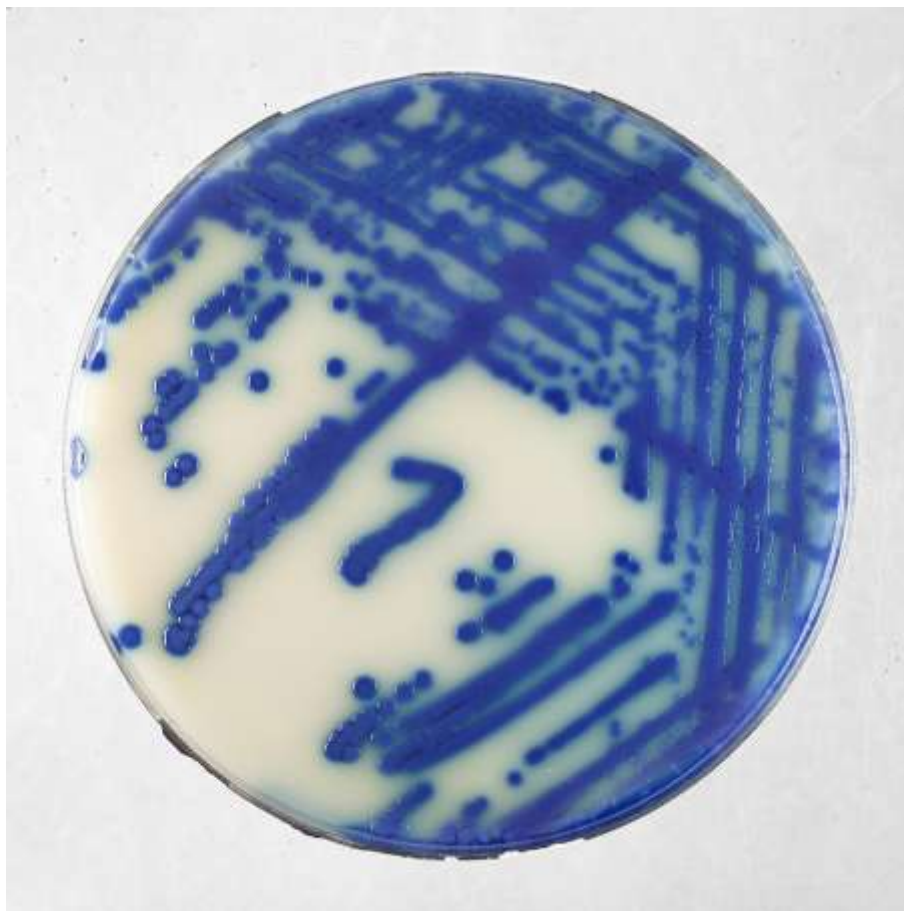


**ChromArt**

**CRE**

**Carbapenem Resistant Enterobacteriaceae**



**Improved chromogenic medium  
for detection of  
Carbapenem-Resistant  
Gram-negative bacteria**



**Biolife**

# ChromArt CRE

**Improved selective differential medium for the detection of Carbapenem Resistant Gram-negative bacteria in clinical specimens**

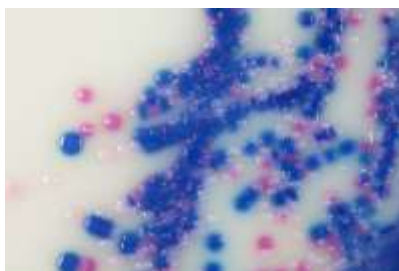
## MAIN CHARACTERISTICS AND ADVANTAGES

- Very good productivity obtained with selected and standardized peptones.
- Enhanced visual differentiation of the colonies due to strong chromatic reactions and opaque contrasting background.
- Specific enzymatic reactions for presumptive identification of main CRE isolates.
- Improved formulation with a very high sensitivity and specificity in the detection of CRE strains (1)

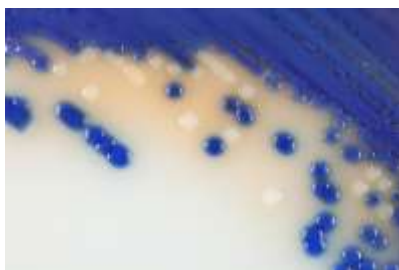
## CRE DETECTION AND DIFFERENTIATION

### SAMPLE PROCESSING

- Allow ChromArt CRE plates to warm to room temperature.
- Inoculate ChromArt CRE directly with the faecal specimen or from an isolated colony prepared as a liquid suspension.
- Incubate at 37°C for 18-24 hours in aerobic conditions.
- Reading and interpretation according to the pictures.
- Confirm carbapenemase production using an appropriate method.



**CRE positive**  
**Escherichia coli :**  
Pink-Magenta colonies



**CRE positive KESC: (Klebsiella, Enterobacter, Serratia, Citrobacter):**  
Blue/blue-violet colonies



**CRE positive**  
**Proteus, Morganella, Providencia:**  
Colonies with brown halo

**Resistant Non CRE Acinetobacter baumannii:**  
White colonies

1- Valutazione del terreno ChromArt CRE (Biolife) per la rilevazione di batteri Gram-negativi resistenti ai carbapenemi. Silvia Bracco, Carola Mauri, Elisa Meroni, Luigi Principe, Beatrice Pini, Francesco Luzzaro. XLIII Congresso AMCLI, Sezione Poster, 2014.

### Packaging



REF 548015	ChromArt	CRE	20 ready to use plates (90 mm)
REF 4080252	ChromArt	CRE-ESBL Base	500 g (dehydrated medium)
REF 4240082	ChromArt	CRE Supplement	10 x 500 mL

