

**ChromArt**

**ESBL**

**Extended Spectrum Beta Lactamase**



**Improved chromogenic medium  
for the detection of  
Extended Spectrum  $\beta$ -Lactamase  
producing Enterobacteria.**



**Biolife**

# ChromArt ESBL

**Improved selective and differential medium for the detection of Extended Spectrum  $\beta$ -Lactamase producing *Enterobacteriaceae*.**

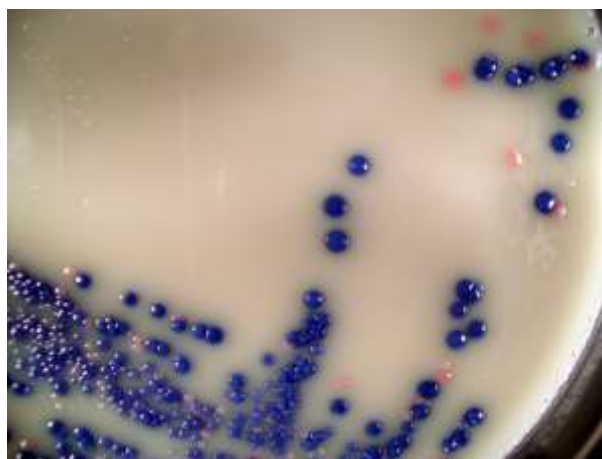
## MAIN CHARACTERISTICS AND ADVANTAGES

- Very good productivity obtained with selected and standardized peptones.
- Enhanced visual differentiation of the colonies due to strong chromatic reactions and to opaque contrasting background.
- Specific enzymatic reactions for presumptive identification of main ESBL isolates.
- Improved formulation with a very high sensitivity and specificity in the detection of ESBL producing Enterobacteria (1).

## ESBL DETECTION AND DIFFERENTIATION

### SAMPLE PROCESSING

- Allow ChromArt ESBL plates to warm to room temperature.
- Inoculate ChromArt ESBL directly with the faecal specimen or urine or other clinical specimens or from an isolated colony prepared as a liquid suspension.
- Incubate at 37°C for 18-24 hours in aerobic conditions.
- Reading and interpretation according to the pictures.
- Confirm ESBL production using an appropriate method.



**ESBL producing *E.coli* :**  
Pink colonies

**ESBL producing KESC:  
(*Klebsiella, Enterobacter, Serratia, Citrobacter*):**  
Blue/blue-violet colonies



**ESBL producing *Proteus, Morganella, Providencia*:**  
Colonies with brown halo

1- Valutazione del terreno ChromArt ESBL (Biolife) per la rilevazione degli Enterobatteri produttori di ESBL in campioni clinici. Cristina Comi, Silvia Bracco, Laura Colombo, Patrizia Bartesaghi, Rita Barletta, Martha Silva, Francesco Luzzaro. XLIII Congresso AMCLI, Sezione Poster, 2014.



### Packaging

REF 548020	ChromArt ESBL	20 ready to use plates (90 mm)
REF 4080252	ChromArt CRE- ESBL Base	500 g (dehydrated medium)
REF 4240080	ChromArt ESBL Supplement	10 x 500 mL

