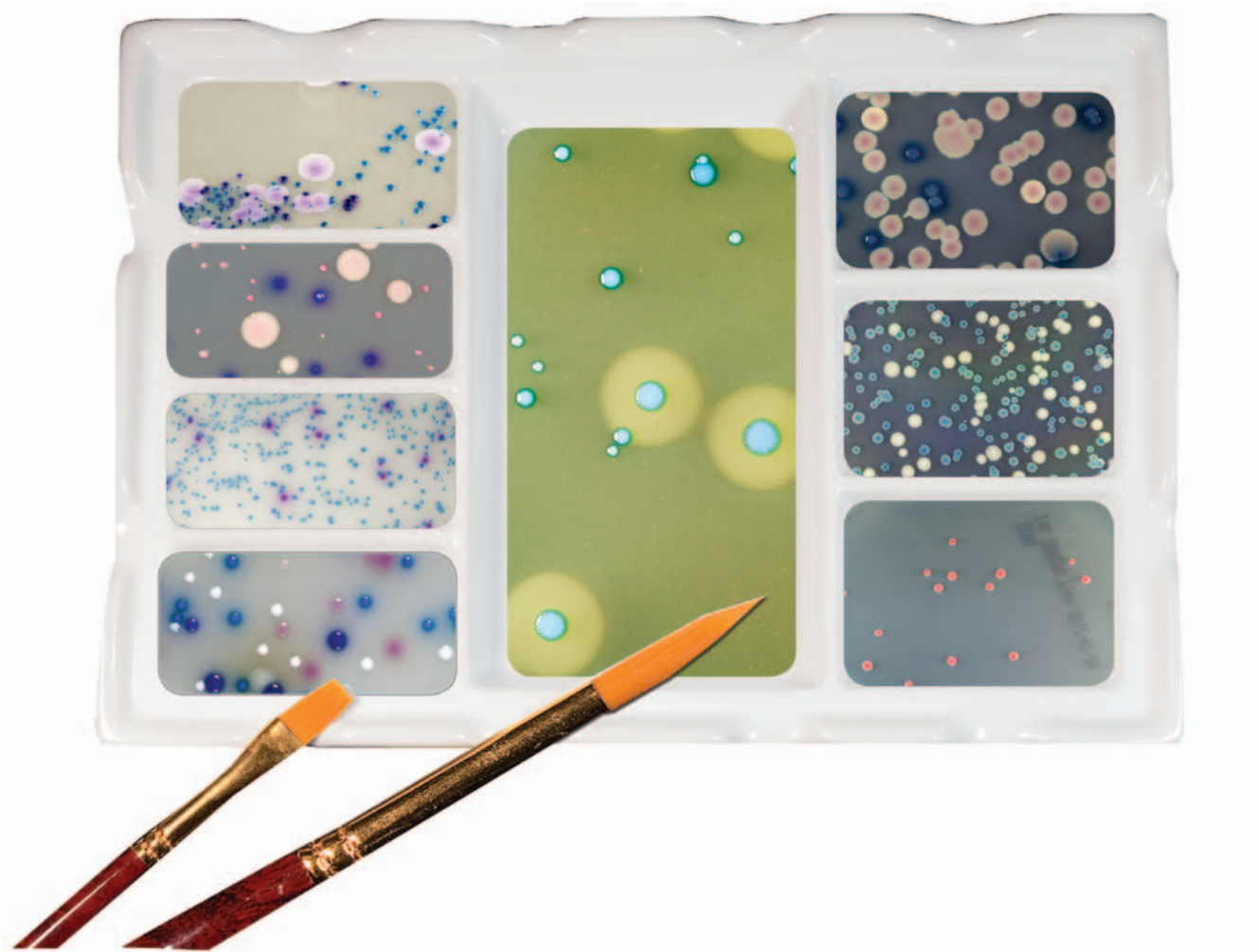


ChromArt
CHROMOGENIC
CULTURE MEDIA
For food microbiology



**For isolation and identification
of microorganisms in food,
animal feeding stuffs and water**



Biolife

ChromArt

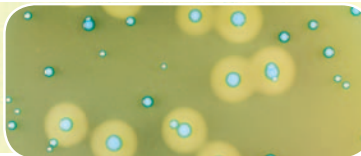
CHROMOGENIC MEDIA

MAIN CHARACTERISTICS AND ADVANTAGES

- ☑ Very good productivity obtained with selected and standardized ingredients and chromogenic substrates.
- ☑ Inhibition of non- target organisms with selective agents.
- ☑ Enhanced visual differentiation of the colonies due to the strong chromatic reactions.
- ☑ Specific enzymatic reactions for direct identification of the main food pathogens: *Salmonella*, *Listeria* spp. and *L.monocytogenes*, *E.coli*, *Enterobacteriaceae*, Coliforms, Enterococci, *Cronobacter sakazakii*, *E.coli* O157.

Listeria monocytogenes and Listeria spp.

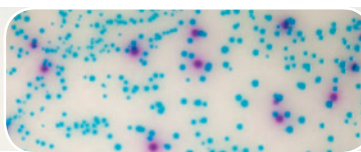
ChromArt ALOA (Agar Listeria Ottaviani & Agosti)
- ALOA: 500g REF 401605
- ALOA Enrichment Selective Suppl.: REF 423501
- 20 ready to use plates (90mm): REF 541605



L.monocytogenes:
green-blue colonies with opaque halo.
Listeria innocua:
green blue colonies without opaque halo.

Salmonella spp.

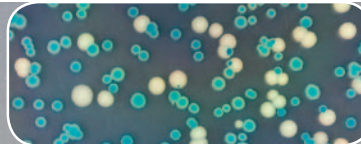
ChromArt CSA (Chromogenic Salmonella Agar)
- CSA: 500g REF 4053502
- Salmonella Selective Supplement: REF 4240013
- 20 ready to use plates (90mm): REF 545350



Salmonella enteritidis:
magenta colonies.
Enterobacter aerogenes:
green blue colonies.

E.coli

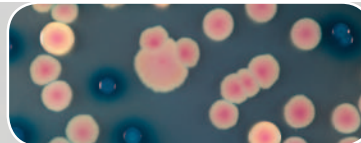
ChromArt TBX (Tryptone Bile X-Gluc) Agar
- TBX Agar: 500g REF 402156
- 20 ready to use plates (90mm): REF 542156
- 30 ready to use plates (55mm): REF 492156



Escherichia coli:
green-blue colonies.
Enterobacter aerogenes:
colourless colonies.

Enterobacteriaceae - Escherichia coli - Coliforms

ChromArt SENECA (Simultaneous Enumeration Enterobacteriaceae E.coli Coliforms Agar)
- SENECA Base: 500g REF 405582S2
- SENECA EE-EC Supplement: REF 4240023



Salmonella tiphymurium:
red colonies.
Escherichia coli:
blue colonies.

Escherichia coli - Coliforms

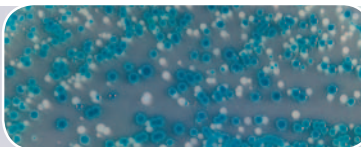
ChromArt CCoA (Chromogenic Coliform Agar)
- CCoA: 500g REF 4012992
- 20 ready to use plates (90mm): REF 541299
- 30 ready to use plates (55mm): REF 497100



Escherichia coli:
blue colonies.
Enterobacter aerogenes:
salmon red colonies.

Cronobacter sakazakii

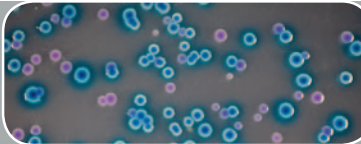
ChromArt ESIA (Enterobacter sakazakii Isolation Agar)
- mLST Broth Base: 500 g REF 4014762
- ESIA: 500g REF 401478
- 20 ready to use plates (90mm): REF 541478



Cronobacter sakazakii:
blue colonies.
Enterobacter aerogenes:
colourless colonies.

Escherichia coli O157

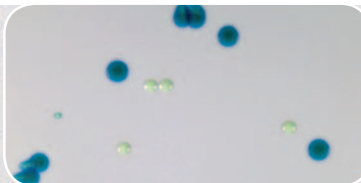
ChromArt CECO (Chromogenic E.coli O 157 Agar)
- CECO: 500 g REF 4055812



E.coli O157:
magenta red colonies.
E.coli:
green blue colonies.

Enterococci

ChromArt ECOAgar(Enterococcus Chromogenic Ottaviani & Agosti)
- ECOAgar: 500g 4014302
- Kanamycin Supplement: REF 4240055
- 20 ready to use plates (90mm): REF 541430
- 30 ready to use plates (55mm): REF 491430



Enterococcus faecium:
blue colonies.



Biolife