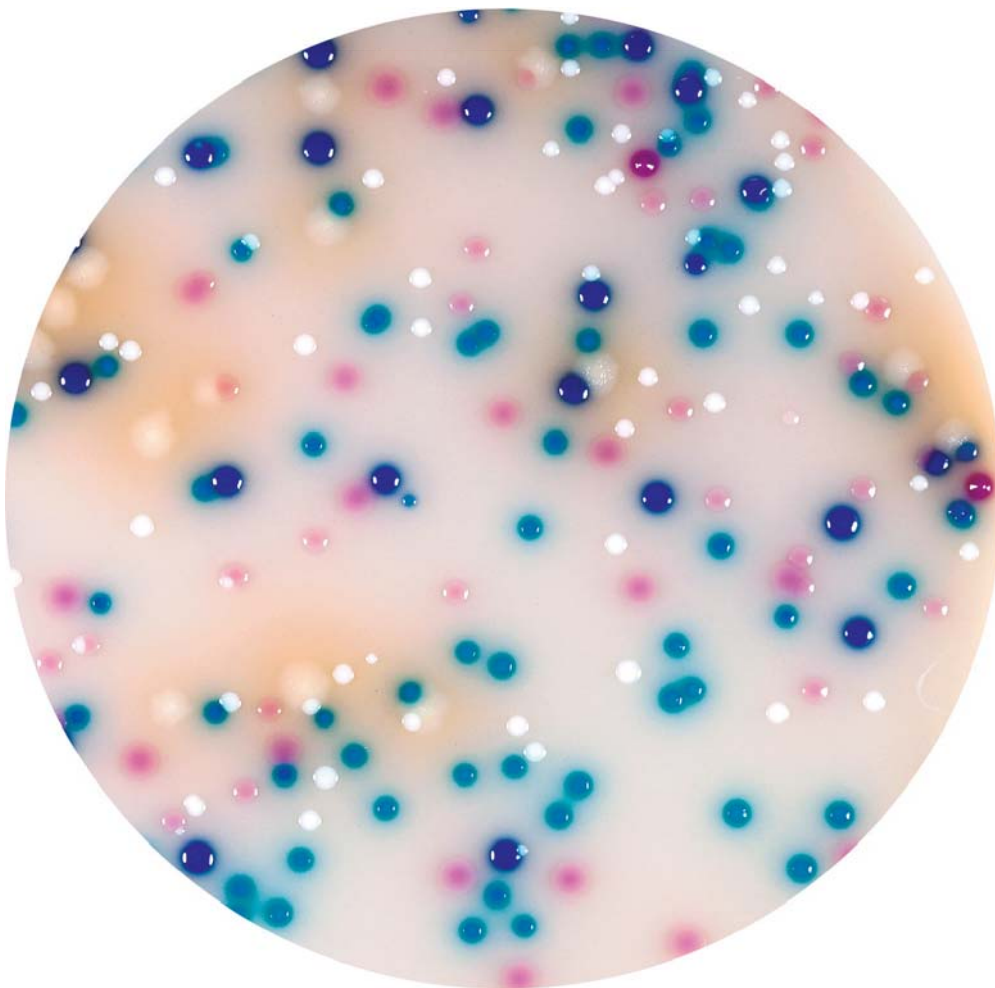


**ChromArt**

# **CUA IV**

## **Urinary Tract Infections**



**Improved chromogenic medium  
for identifying UTI pathogens**



**Biolife**

Improved non-selective differential medium for presumptively identifying bacterial isolates from primary clinical specimens and for the enumeration of UTI pathogens

### MAIN CHARACTERISTICS AND ADVANTAGES

- Very good productivity obtained with selected and standardized peptones.
- Optimized agar concentration to inhibit the swarming of *Proteus* spp.
- Enhanced visual differentiation of the colonies due to strong chromatic reactions and to opaque contrasting background.
- Specific enzymatic reactions for presumptive identification of both gram positive and gram negative pathogens.

### COMPLETE IDENTIFICATION



#### ***Escherichia coli***

Pink colonies:  $\beta$ -galactosidase pos.,  $\beta$ -glucosidase neg.  
Indole test positive



#### ***Enterococcus faecalis***

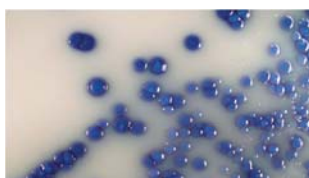
Turquoise blue colonies:  $\beta$ -galactosidase pos.,  $\beta$ -glucosidase neg.  
Microscopic examination: gram positive cocci



#### ***Proteus* spp.**

Brown colonies: tryptophane deaminase pos.,  $\beta$ -galactosidase neg.,  
 $\beta$ -glucosidase neg.  
Indole test neg.: *Proteus mirabilis*;  
Indole test pos.: *Providencia* or *Morganella* or *Proteus* spp. indole pos.

### PRESUMPTIVE IDENTIFICATION



#### **KES**

Blue/blue-violet colonies:  
 $\beta$ -galactosidase positive  
 $\beta$ -glucosidase positive



#### **Staphylococci and yeasts**

White colonies: perform the  
microscopic examination:  
Cocci (carry on the complete  
identification)  
Yeasts



#### **Mixed cultures**

In the picture: white colonies:  
*S.aureus*; pink colonies: *E.coli*;  
turquoise blue colonies:  
*E.faecalis*; dark blue colonies:  
*K.pneumoniae*

### Packaging

REF 549810G

Chromogenic Urine Agar IV

20 ready to use plates (90 mm)

REF 409810G2

Chromogenic Urine Agar IV

500 g, dehydrated medium



**Biolife**

